



WOMEN IN CONSTRUCTION SCHOLARSHIP

ABOUT OKLAND'S WOMEN IN CONSTRUCTION SCHOLARSHIP

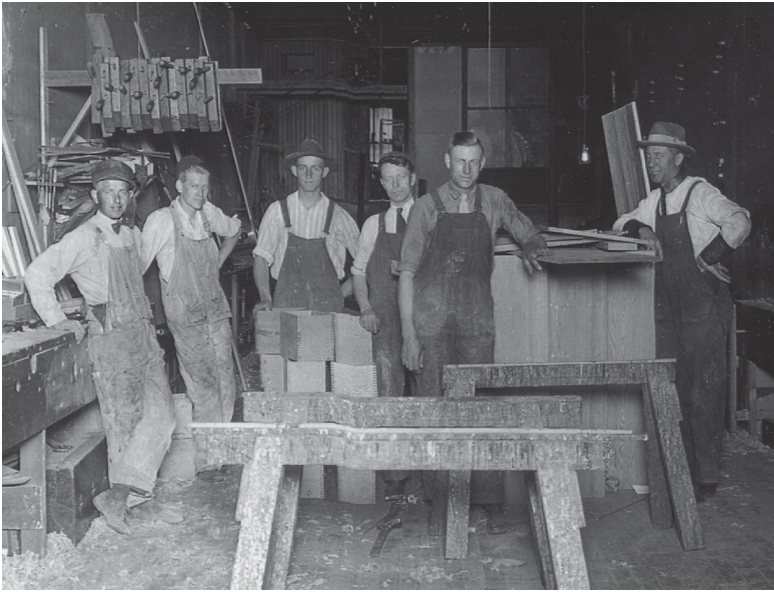
Women in construction management represent 10.9% of the workforce according to the U.S. Bureau of Labor. Women working in the construction management profession have certainly made progress over the years. However, challenges remain. Okland's Women in Construction Scholarship recognizes important contribution women are making to creating remarkable experiences in construction. The Scholarship provides support to women who are entering their sophomore or junior year and working towards a career in construction management, and whose work exemplifies the best in class.





“Okland’s Women in Construction Scholarship is directed toward those women who are **committed to moving the mark** when it comes to the impact women have in the construction industry.”

Morgan Betancourt
Project Director



ABOUT OKLAND

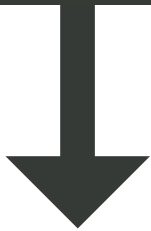
Our roots reach back to 1918, when John Okland first applied his knowledge of carpentry and shipbuilding, gained in his native Norway, to create the foundation of Okland Construction. From those humble beginnings, Okland has become a company of skilled builders who have left their mark of craftsmanship and uncompromising quality on thousands of buildings throughout North America. Okland continues to honor its preceding generations' long-held ideas of honesty, value, and efficiency.



SCHOLARSHIP DETAILS

ELIGIBILITY

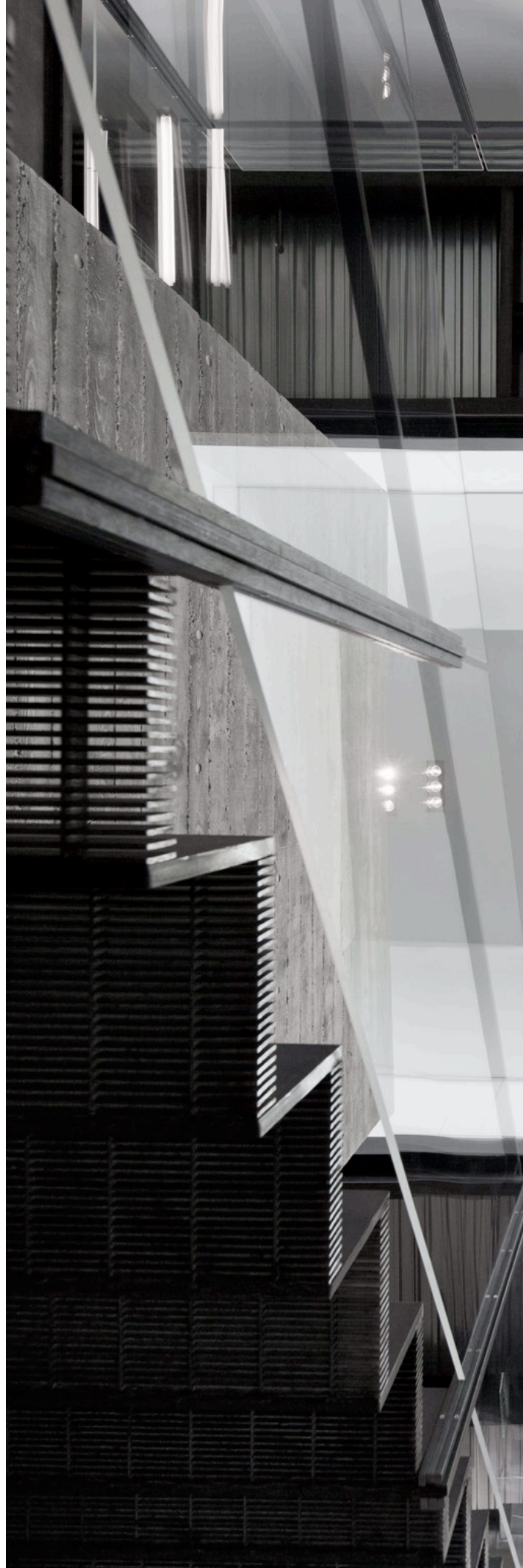
Women enrolled at a U.S. educational institution who will begin their sophomore or junior year of an accredited construction management or similar program (e.g., engineering, architecture, etc.) in Fall 2023 are eligible.



AWARD

A \$5,000 tuition scholarship and internship will be awarded to two students who are eligible to apply.

* Current Okland employees are ineligible to participate.



APPLICATION PROCESS

SUBMISSION REQUIREMENTS FOR TUITION SCHOLARSHIP

Each application must include:

1. **Resume and essay.** The essay should be no more than 500 words and should outline why you are passionate about having a career in construction management.
2. **Nomination letter.** A nomination letter from the dean or chair (or assistant dean/chair) of the program that confirms that the applicant meets the eligibility criteria and describes their professional excellence.
3. **Construction management project.** One mid-to-advanced-level construction management project you completed and that was not materially edited by others, e.g., estimates, schedules, safety plan, etc. It must not be a group project piece and not to exceed 10 pages (excerpts of larger projects are acceptable).

APPLY ONLINE

Applicants for Okland's Women in Construction Scholarship must be submitted through the following link no later than March 30, 2023.

TO APPLY:

[OKLAND.SLIDEROOM.COM/#/LOGIN](https://okland.slideroom.com/#/LOGIN)



SCHOLARSHIP TIMELINE

- | | |
|-------------------------|--|
| February 1, 2023 | Application portal opens |
| March 30, 2023 | Deadline to complete on-line application |
| May 2023 | Winners notified via email |
| August 2023 | Scholarship funds distributed at the end of internship |

SELECTION PROCESS AND CRITERIA

Okland will review submissions and select one or more winner(s). Winners will receive a paid internship at Okland, where they will be paired with an Okland mentor who will serve as a resource during the internship and ensuing academic year. Accepting and completing the internship is a condition of receiving the scholarship award. Here's what we will be looking for:

Top submissions will demonstrate how your project solution is distinct and delivers value.

Successful submissions will demonstrate tangible and measurable ways your project provided remarkable benefits to its intended audience.

The best submissions will show innovative thought and fend off the status quo.

TO APPLY:

[OKLAND.SLIDEROOM.COM/#/LOGIN](https://okland.slideroom.com/#/login)

* Current Okland employees are ineligible to participate.

We are passionate about **creating remarkable experiences** in everything we do. It's not only business...it's personal. We make decisions based on our core values to be distinct, earn trust, deliver value, create shared success; and to do so while remaining humble.



BE DISTINCT



EARN TRUST WITH EVERY ACTION



DELIVER VALUE



CREATE SHARED SUCCESS



BE HUMBLE

For questions or more
information, please contact us.

scholarships@okland.com